

# CHAUNCEY

THE  
HOMESTEAD  
AT MILTON



# CHAUNCEY

Designed by

**STEPHEN FULLER**

Built by

**LOUDERMILK CUSTOM HOMES**

Developed by

**HOMESTEAD MILTON PARTNERS, LLC.**







The Homestead at Milton  
is a rare collection of multi-acre,  
independent residential properties  
woven together to form a collective  
singular vision for living today in a way  
that has not been seen for decades in  
America.



"Where  
Home  
and  
Land  
Meet"

STEPHEN FULLER



THE  
**HOMESTEAD**  
AT MILTON

**LOT 14**

315 Lakeshore Road | Milton, Georgia 30004



THE  
**HOMESTEAD**  
AT MILTON

**LOT 14**

315 Lakeshore Road | Milton, Georgia 30004





THE  
**HOMESTEAD**  
AT MILTON

**LOT 14**  
**Site Plan**

315 Lakeshore Road | Milton, Georgia 30004



The Chauncey will reside within The Homestead at Milton on 4.38 acres. This special place will offer a rare opportunity to create a home place your family can hold dear for generations.

While the generous lot size will ensure there is great separation and privacy between the home sites, there will also be a collective connection among residents socially, as well as visually, due to the shared architectural values and principles that form the essential elements within the built environment.





# CHAUNCEY

## LOT 14 Front Perspective



# CHAUNCEY

## LOT 14 Front Perspective

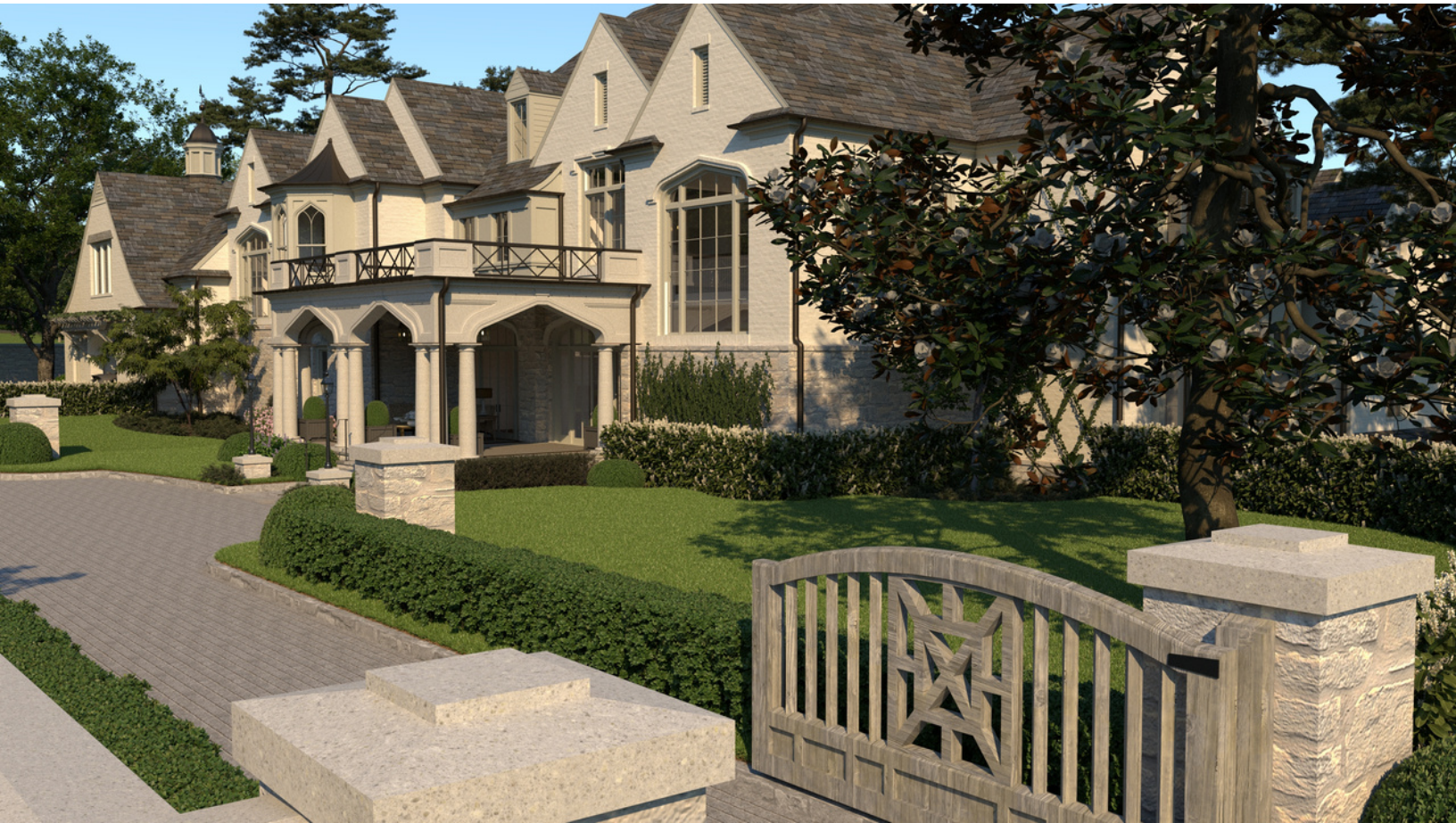




# CHAUNCEY

LOT 14

Front Motor Court Perspective





# CHAUNCEY

LOT 14

Front Motor Court Perspective





# CHAUNCEY

## LOT 14 Rear Perspective





# CHAUNCEY

## LOT 14 Aerial Perspective





# CHAUNCEY

## LOT 14 Front Aerial Perspective





CHAUNCEY

LOT 14

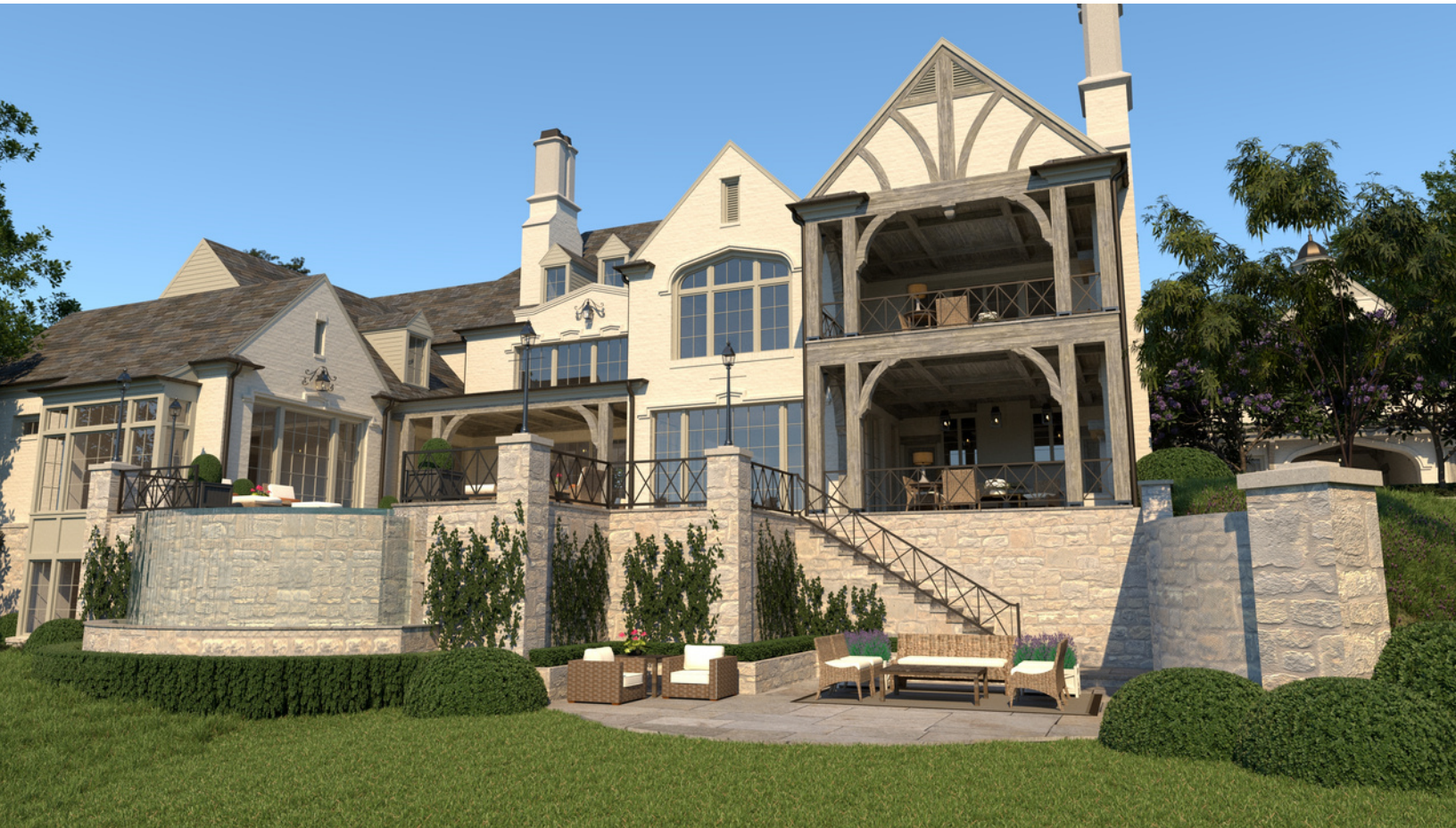
Side Aerial Perspective





CHAUNCEY

LOT 14  
Rear Perspective





CHAUNCEY

LOT 14

Rear Aerial Perspective



CHAUNCEY

LOT 14

Rear Aerial Perspective





CHAUNCEY

LOT 14

Rear Aerial Perspective



# CHAUNCEY





THE  
**HOMESTEAD**  
AT MILTON

The Milton area represents the best in American Country Living. This means homes will intentionally be designed to celebrate this heritage. This will be reflected in the thoughtful sequencing of staged progressions of spaces for different experiences. Drives through tree alleys, handsome arrival courts, classically inspired landscape and architecture will ensure homes will be destinations; they will not be competitive with one another, but rather confidently relaxed and independent.

Separation, privacy, and visual respect will be essential drivers for each home design. Site planning guidelines will ensure compositions never waver from what is important to the human eye. Beauty, proportion, balance, and graceful architectural solutions will all be the hallmarks of The Homestead at Milton.



# Customize CHAUNCEY

If you love the Chauncey but would like to modify the plan to better meet your families needs, STEPHEN FULLER INC. and LOUDERMILK HOMES can make that happen.

Schedule a meeting with Stephen Fuller and Loudermilk Homes to review the Chauncey Plan to discuss the changes you would like to make to the plan.

The modifications could be anything from overall size of the house, floor plan flow, larger garage, guest cottage, etc.

See the CONTACT US page in the back of this booklet to schedule an appointment to discuss making Chauncey you own personal home.

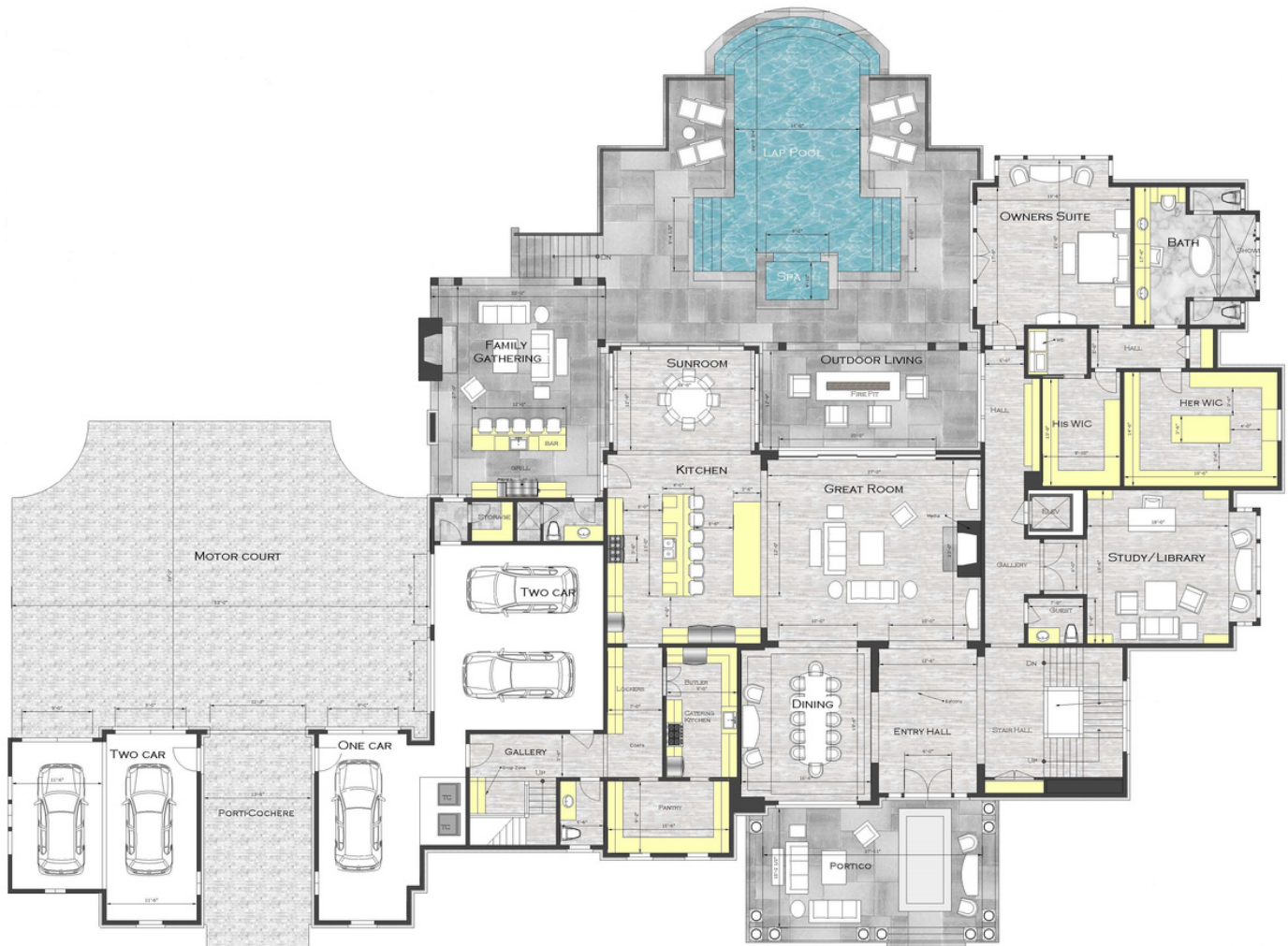
Now is the time to make changes to the Chauncey before building begins.





# CHAUNCEY

## Main Level Floor Plan



**HEATED SQ. FTG.**  
Main Level: 5,407 SQ. FT.  
Upper Level: 4,803 SQ. FT.  
Terrace Level: 4,680 SQ. FT.  
**Total: 14,890 SQ. FT.**



# CHAUNCEY

## Upper Level Floor Plan



### HEATED SQ. FTG.

Main Level: 5,407 SQ. FT.

Upper Level: 4,803 SQ. FT.

Terrace Level: 4,680 SQ. FT.

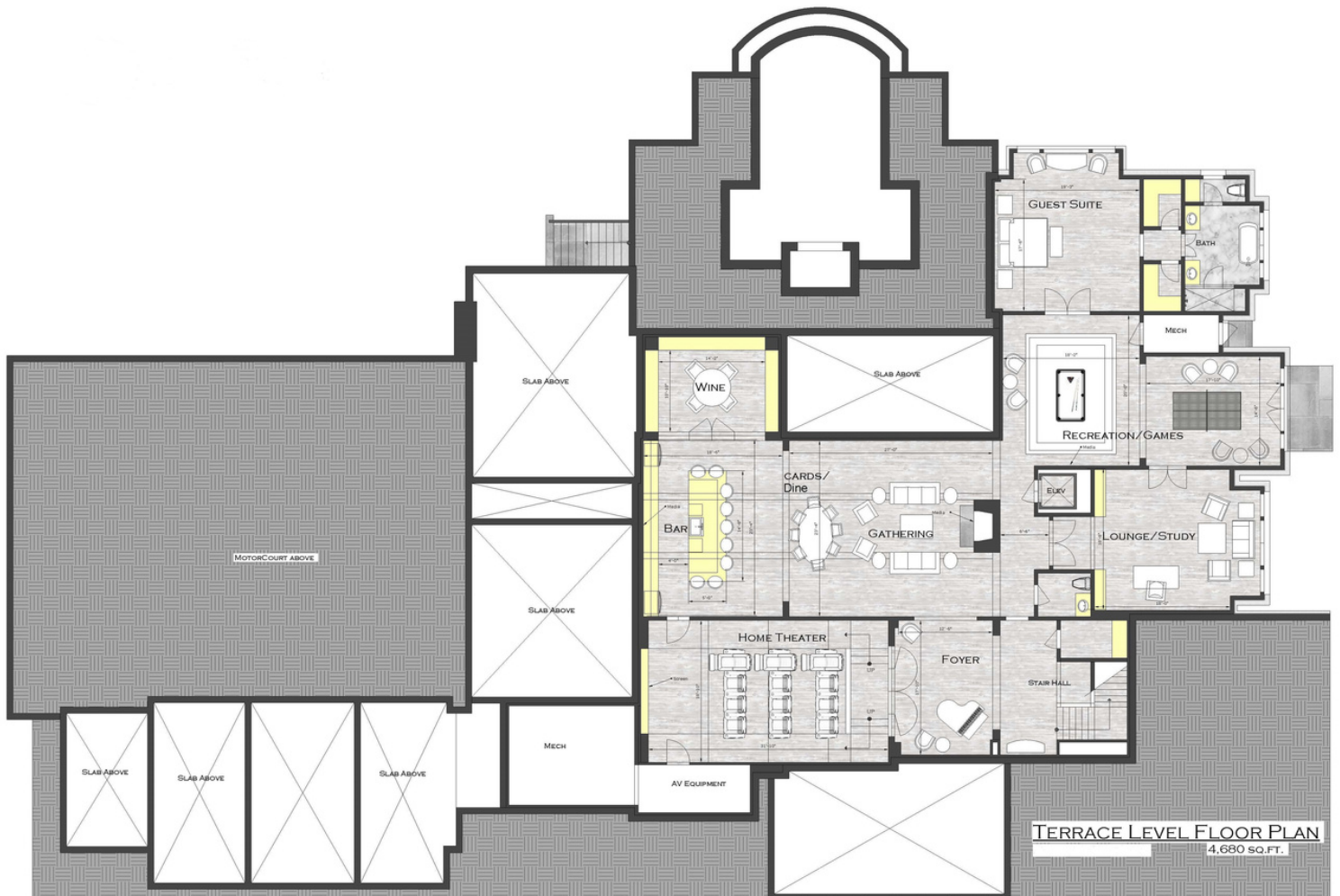
**Total: 14,890 SQ. FT.**





# CHAUNCEY

## Terrace Level Floor Plan



### HEATED SQ. FTG.

Main Level: 5,407 SQ. FT.

Upper Level: 4,803 SQ. FT.

Terrace Level: 4,680 SQ. FT.

**Total: 14,890 SQ. FT.**



# CHAUNCEY



Arrival Elevation



Rear Elevation





# CHAUNCEY



LEFT SIDE ELEVATION

Left Side Elevation



RIGHT SIDE ELEVATION

Right Side Elevation







Each home in the community will be authentic, present, and carefully crafted within its own environment. Each home will be designed to fit not only the physical conditions of each lot, but also to fit the special requirements of each family and their unique lifestyle. Each home will be carefully designed for modern needs, but without losing sight of our beloved historical precedents that are respected and valued.







## Contact Us

### **JD Kent, REALTOR®**

Golf Course Brokerage

Land & Luxury Homes

100 Mansell Court East, Suite 115

Roswell, GA 30076

Cell: 678-787-7949

Office: (678) 352-3314

Fax: (770) 649-9207

Email: [JD.Kent@bhhsgeorgia.com](mailto:JD.Kent@bhhsgeorgia.com)

Web: [www.TheHomesteadAtMilton.com](http://www.TheHomesteadAtMilton.com)

Lot Reservation

### DESIGN

#### **STEPHEN FULLER INC.**

3320 Holcomb Bridge Road, Suite B

Peachtree Corners, GA | 30092

Email: [info@STEPHENFULLER.com](mailto:info@STEPHENFULLER.com)

Phone: 678-775-4663

### BUILDER

#### **LOUDERMILK CUSTOM HOMES**

Phone: (678) 578-6766



THE HOMESTEAD AT MILTON

15135 Hopewell Road

Milton, GA 30004

[www.thehomesteadatmilton.com](http://www.thehomesteadatmilton.com)



THE HOMESTEAD AT MILTON  
15135 Hopewell Road  
Milton, GA 30004  
[www.thehomesteadatmilton.com](http://www.thehomesteadatmilton.com)