

# CHAUNCEY



THE

## HOMESTEAD

AT MILTON



CHAUNCEY



THE  
HOMESTEAD

AT MILTON

Designed by

STEPHEN FULLER

Built by

LOUDERMILK CUSTOM HOMES

Developed by

HOMESTEAD MILTON PARTNERS, LLC.

LOUDERMILK  
CUSTOM HOMES

STEPHEN FULLER

BERKSHIRE HATHAWAY  
HomeServices

Georgia  
Properties

NEW HOMES DIVISION  
CONDOS • SINGLE FAMILY • TOWNHOMES

# CHAUNCEY

If you love the Chauncey but would like to modify the plan to better meet your family's needs, STEPHEN FULLER INC. and LOUDERMILK HOMES can make that happen.

Schedule a meeting with STEPHEN FULLER and Loudermilk Homes to review the Chauncey Plan to discuss the changes you would like to make to the plan.

The modifications could be anything from overall size of the house, floor plan flow, larger garage, guest cottage, etc.

See the CONTACT US page in the back of this booklet to schedule an appointment to discuss making Chauncey your own personal home.

Modify the Chauncey before  
building begins.







The Homestead at Milton  
is a rare collection of multi-acre,  
independent residential properties  
woven together to form a collective  
singular vision for living today in a way  
that has not been seen for decades in  
America.

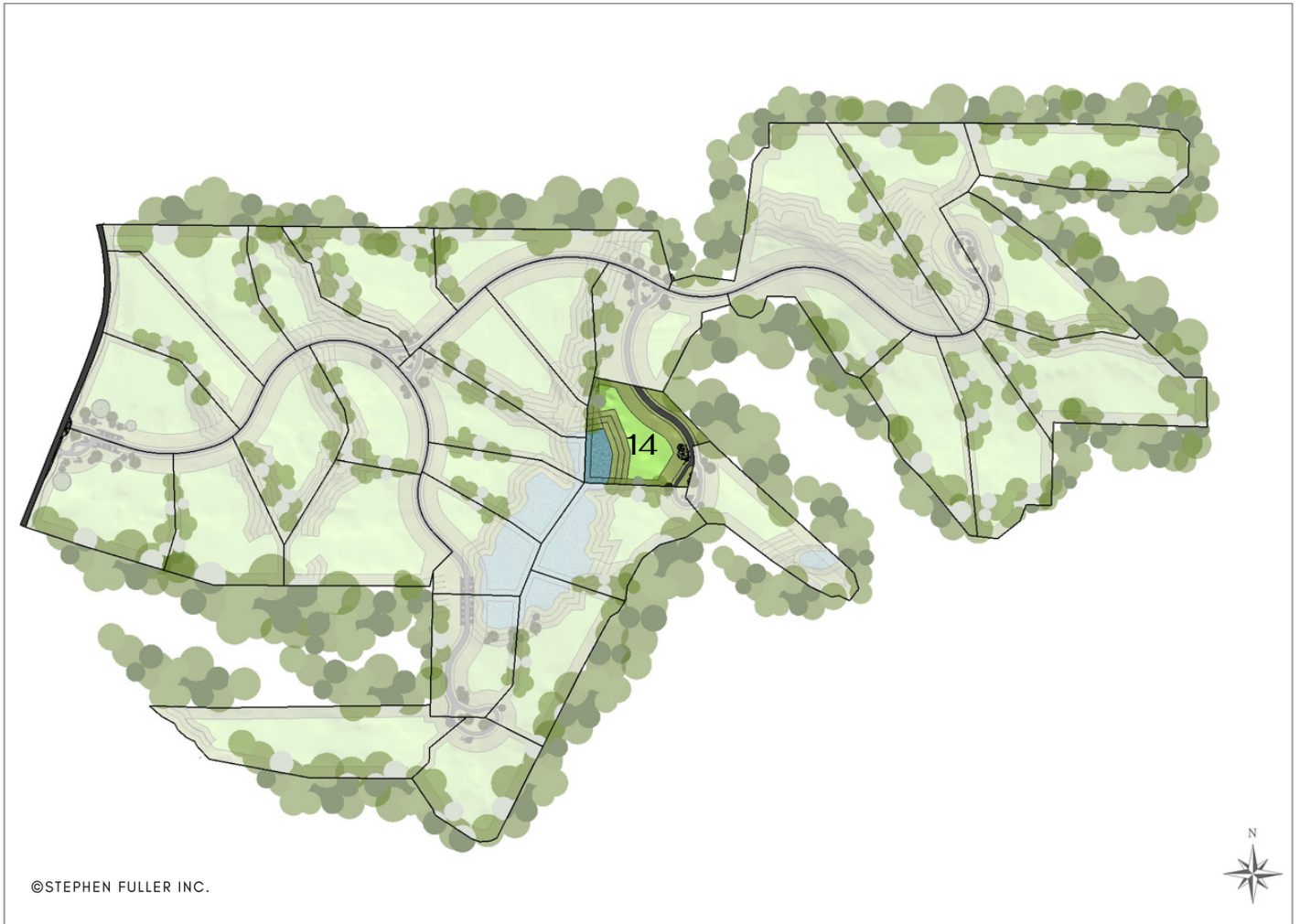




THE  
**HOMESTEAD**  
AT MILTON

**LOT 14**

315 Lakeshore Road | Milton, Georgia 30004



©STEPHEN FULLER INC.



THE  
**HOMESTEAD**  
AT MILTON

**LOT 14**

315 Lakeshore Road | Milton, Georgia 30004



Actual Lot 14 Photo





THE  
**HOMESTEAD**  
AT MILTON

**LOT 14**  
**Site Plan**

315 Lakeshore Road | Milton, Georgia 30004



The Chauncey will reside within The Homestead at Milton on 4.38 acres. This special place will offer a rare opportunity to create a home place your family can hold dear for generations.

While the generous lot size will ensure there is great separation and privacy between the home sites, there will also be a collective connection among residents socially, as well as visually, due to the shared architectural values and principles that form the essential elements within the built environment.



# CHAUNCEY

## LOT 14 Front Perspective





# CHAUNCEY

LOT 14

Front Motor Court Perspective





# CHAUNCEY

LOT 14

Front Motor Court Perspective





# CHAUNCEY

LOT 14

Front Entrance Perspective





CHAUNCEY

LOT 14

Front Aerial Perspective





CHAUNCEY

LOT 14  
Front Aerial Perspective





# CHAUNCEY

## LOT 14 Rear Perspective





# CHAUNCEY

## LOT 14 Rear Perspective





# CHAUNCEY

## LOT 14 Rear Perspective





CHAUNCEY

LOT 14  
Rear Perspective





# CHAUNCEY

## LOT 14 Rear Perspective





# CHAUNCEY

LOT 14

Rear Aerial Perspective





CHAUNCEY

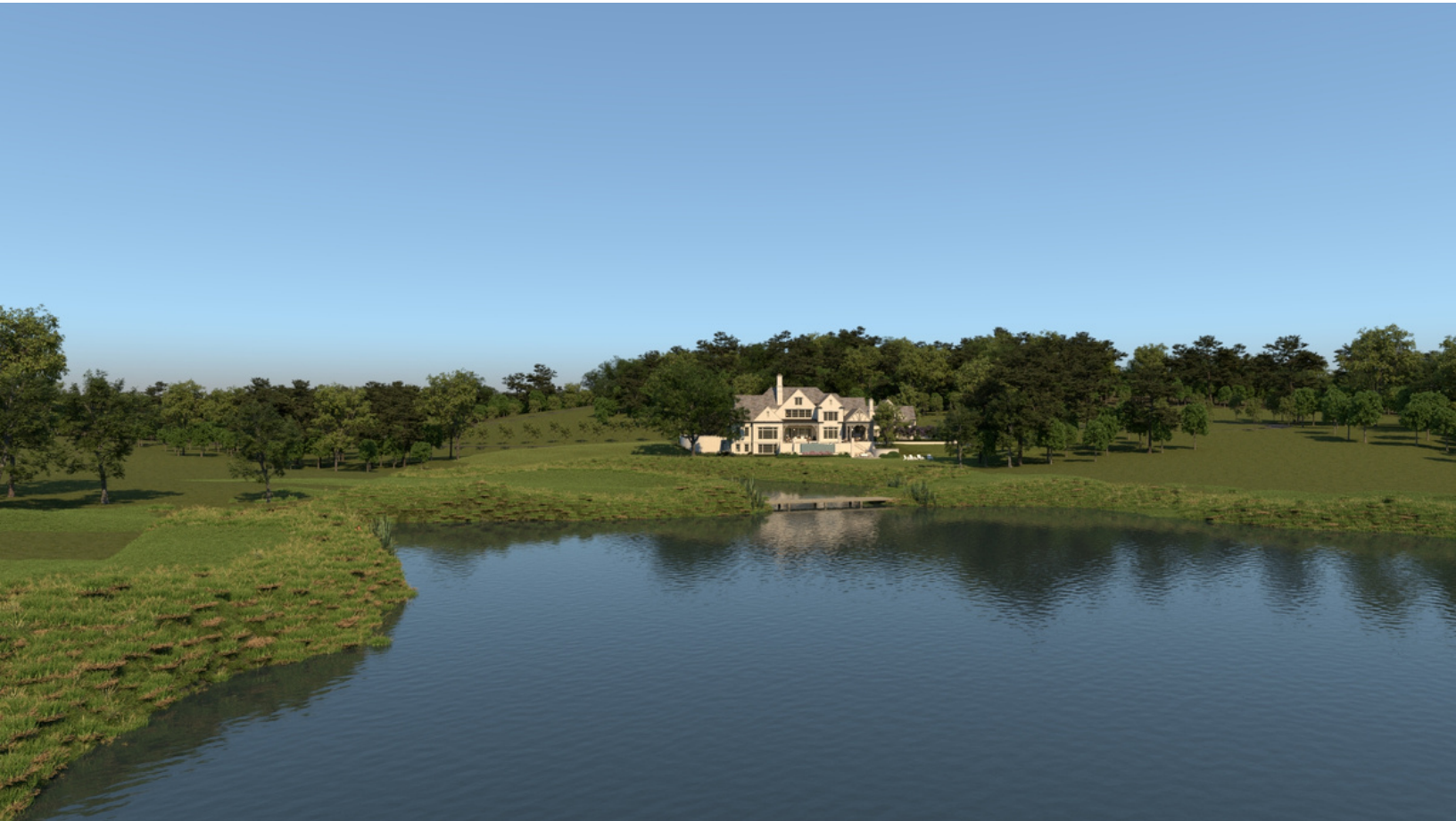
LOT 14  
Rear Perspective



CHAUNCEY

LOT 14

Rear Aerial Perspective





# CHAUNCEY



THE  
**HOMESTEAD**  
AT MILTON

The Milton area represents the best in American Country Living. This means homes will intentionally be designed to celebrate this heritage. This will be reflected in the thoughtful sequencing of staged progressions of spaces for different experiences. Drives through tree alleys, handsome arrival courts, classically inspired landscape and architecture will ensure homes will be destinations; they will not be competitive with one another, but rather confidently relaxed and independent.

Separation, privacy, and visual respect will be essential drivers for each home design. Site planning guidelines will ensure compositions never waver from what is important to the human eye. Beauty, proportion, balance, and graceful architectural solutions will all be the hallmarks of The Homestead at Milton.



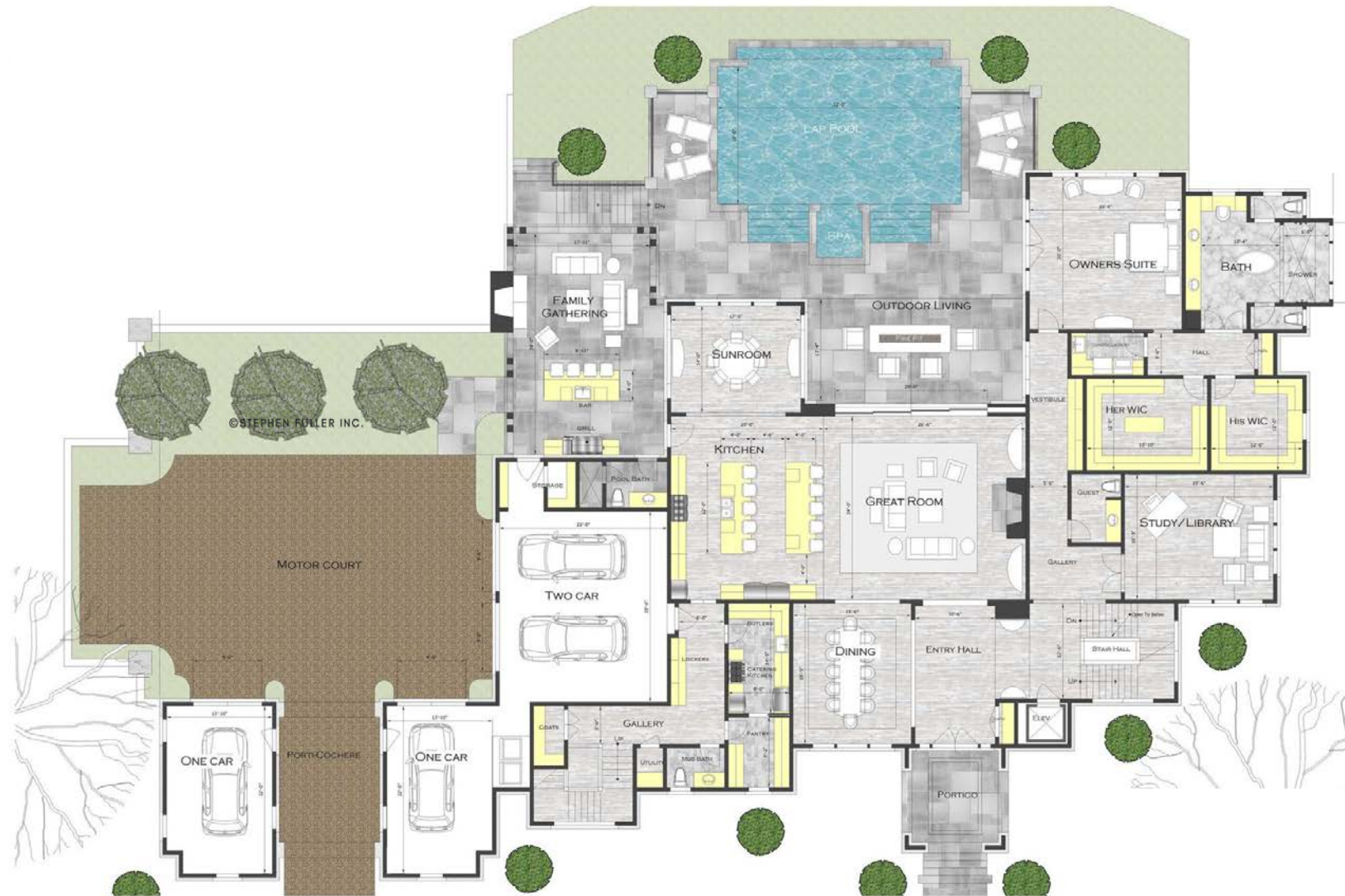


# CHAUNCEY



# CHAUNCEY

## Main Level Floor Plan



### HEATED SQ. FT.

Main Level: 5,094 SQ. FT.

Upper Level: 2,872 SQ. FT.

**Sub Total: 7,966**

Terrace Level: 758 SQ. FT.

**Total: 8,724 SQ. FT.**





# CHAUNCEY

## Upper Level Floor Plan



©STEPHEN FULLER INC.

### HEATED SQ. FT.

Main Level: 5,094 SQ. FT.

Upper Level: 2,872 SQ. FT.

**Sub Total: 7,966**

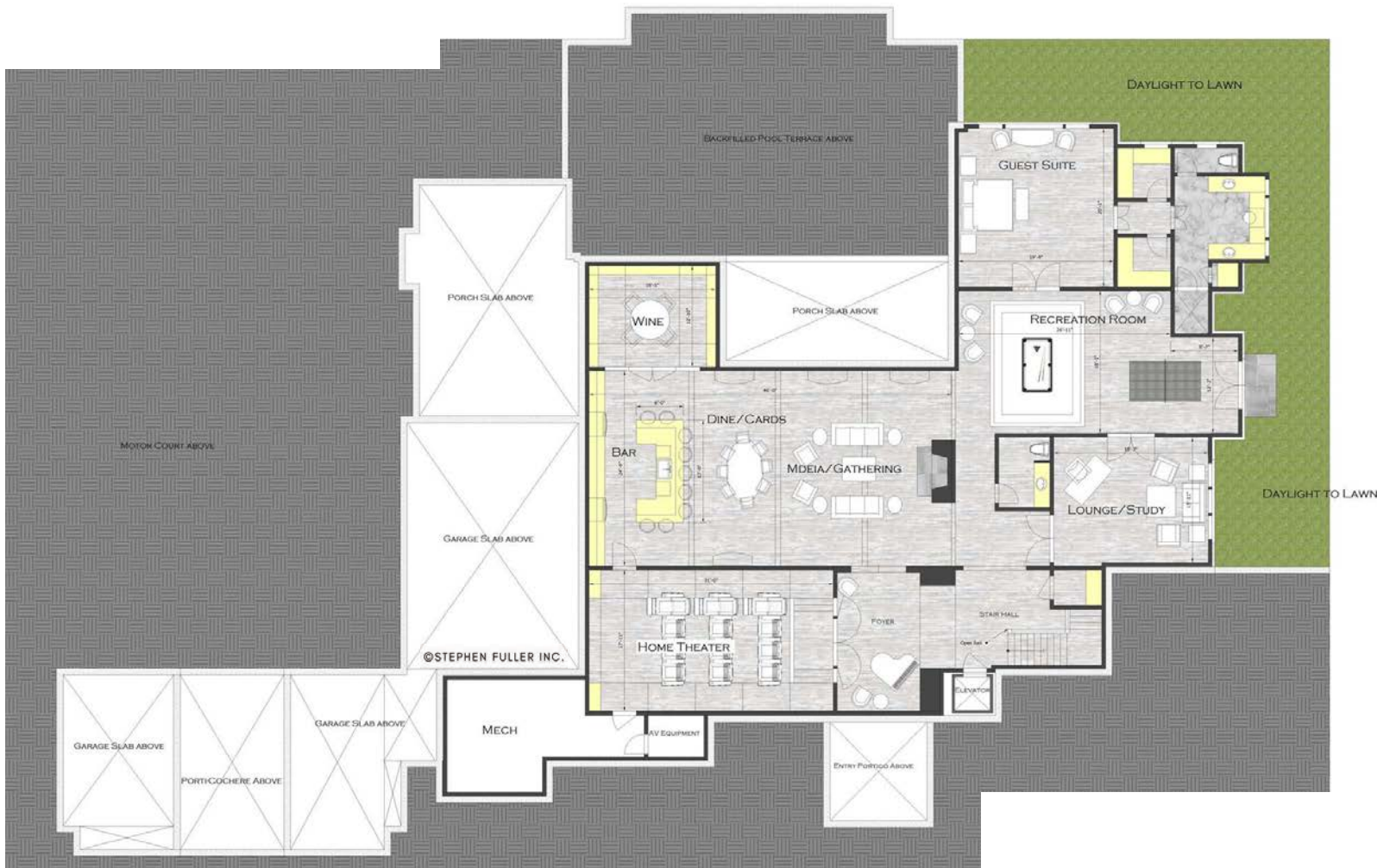
Terrace Level: 758 SQ. FT.

**Total: 8,724 SQ. FT.**



# CHAUNCEY

## Terrace Level Floor Plan



### HEATED SQ. FT.

Main Level: 5,094 SQ. FT.

Upper Level: 2,872 SQ. FT.

**Sub Total: 7,966**

Terrace Level: 758 SQ. FT.

**Total: 8,724 SQ. FT.**





# CHAUNCEY



Arrival Elevation



Rear Elevation





# CHAUNCEY



Left Side Elevation



Right Side Elevation







Each home in the community will be authentic, present, and carefully crafted within its own environment. Each home will be designed to fit not only the physical conditions of each lot, but also to fit the special requirements of each family and their unique lifestyle. Each home will be carefully designed for modern needs, but without losing sight of our beloved historical precedents that are respected and valued.



"Where Home  
and Land  
Meet"

STEPHEN FULLER







## Contact Us

### **JD Kent, REALTOR®**

Golf Course Brokerage

Land & Luxury Homes

100 Mansell Court East, Suite 115

Roswell, GA 30076

Cell: 678-787-7949

Office: (678) 352-3314

Fax: (770) 649-9207

Email: [JD.Kent@bhhsgeorgia.com](mailto:JD.Kent@bhhsgeorgia.com)

Web: [www.TheHomesteadAtMilton.com](http://www.TheHomesteadAtMilton.com)

Lot Reservation

### DESIGN

#### **STEPHEN FULLER INC.**

3320 Holcomb Bridge Road, Suite B

Peachtree Corners, GA | 30092

Email: [info@STEPHENFULLER.com](mailto:info@STEPHENFULLER.com)

Phone: 678-775-4663

### CUSTOM BUILDER

#### **LOUDERMILK CUSTOM HOMES**

Phone: (678) 578-6766

## LOUDERMILK CUSTOM HOMES

**BERKSHIRE HATHAWAY**  
HomeServices

Georgia  
Properties

**NEW HOMES DIVISION**  
CONDOS • SINGLE FAMILY • TOWNHOMES

All information is believed to be accurate but is not warranted and subject to errors, omissions, changes or withdrawal without prior notice. ©2021 BHH Affiliates, LLC. An independently operated subsidiary of HomeServices of America, Inc., a Berkshire Hathaway affiliate, and a franchisee of BHH Affiliates, LLC. Berkshire Hathaway HomeServices and the Berkshire Hathaway HomeServices symbol are registered service marks of Columbia Insurance Company, a Berkshire Hathaway affiliate. Equal Housing Opportunity. ®



THE HOMESTEAD AT MILTON  
15135 Hopewell Road  
Milton, GA 30004  
[www.thehomesteadatmilton.com](http://www.thehomesteadatmilton.com)